



TAKARA BELMONT CORPORATION

2-1-1, Higashishinsaibashi, Chuo-ku, Osaka, 542-0083, Japan

TEL: +81 (0)6 6213 5945

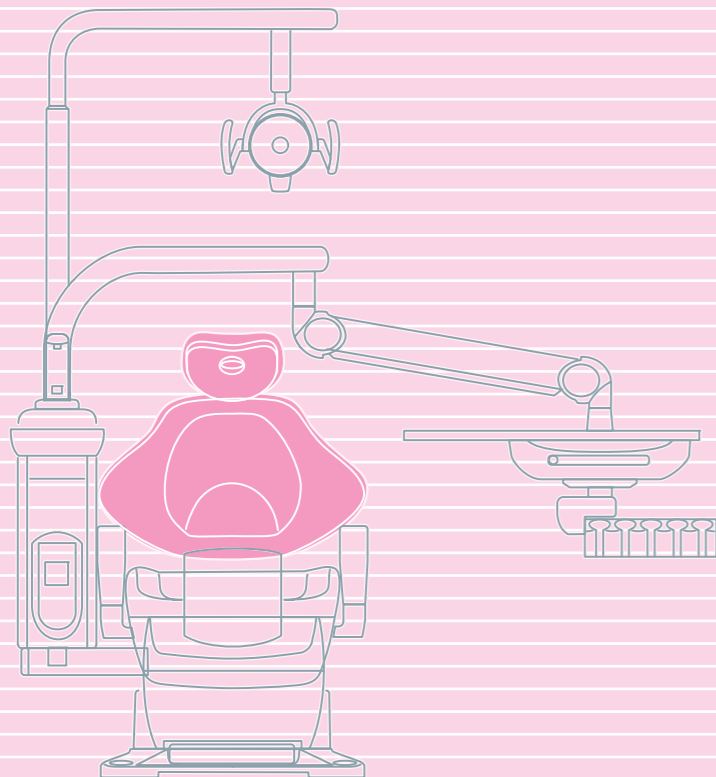
FAX: +81 (0)6 6212 3680

<http://www.takara-net.com>

new generation

CLESTA II

Dental Treatment Centre



The manufacturers reserve the right to alter and improve the specification without notice.

BOOK NO.D-012
Printed in Japan 1202MA



Over The Patient Type

Belmont has combined cutting edge technology with traditional values for a dental treatment centre that offers sophistication, performance, flexibility and above all durability.

The ClestaII epitomizes Belmont's reputation for innovation, style, practicality and reliability. Technologically advanced and superbly engineered it represents a new generation of dental systems.



Cart Type

The split cart type, crafted with a solid iron steel height-adjustable 'U' frame, offers additional flexibility.



With an optional large size operator's tray.

4.5m or 6m cart hose available as an optional extra.

Pedestal Type

Pedestal type cuspidor unit has no umbilical; this eliminates the need for a utility box, contributing to a tidier appearance and easier cleaning.



Utility box for pedestal type



Pedestal Type / Cart

Holder



A Type

E Type

Rod



With optional left side control panel for E type



A Type



E Type

Place



E Type

Variation

| Type | Holder | Place | Rod |
|-----------------------|--------|-------|-------|
| Over The Patient Type | A • E | E | A • E |
| Cart Type | A • E | E | - |
| Pedestal Type | A • E | E | A • E |
| Pedestal Type/Cart | A • E | E | - |

A = Air Type E = Electric Type

Chair for Chair Mount Type



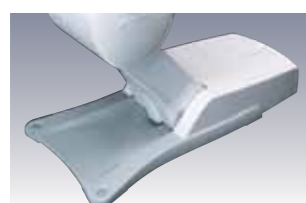
Adjustable chair positioning

A wider range of movements offers a practical working environment that meets all the operators' requirements.



Axis backrest

Synchronized axis backrest ensures optimum patient comfort at all times. Ultra slim backrest for ease of access for both operator and assistant.



Durable diecast base

The sleek styling of the durable aluminum diecast base offers the dentist improved access with maximum chair stability.



Service centre

The built in service centre eliminates the use of external umbilical hoses.

Chair for Pedestal Type



Folding legrest chair

Slim, yet comfortable backrest and vending chair enables easy access to the patient.



Axis backrest

The ergonomic, AXIS mechanism backrest supports the patient comfortably and accommodates the natural movements of the patient's body.



Armrest

Swing-out armrest allow the elderly, handicapped, and others in wheelchairs to get on and off safely and easily.



Joystick switch

The joystick switches enable the operator to position the patient quickly and accurately, keeping hands free and clean.

Unit



Central control panel

The central control panel incorporates easy clean membrane switches to control chair movements, cuspidor bowl flush and cup filler.



Integrated cuspidor

The highly durable integrated cuspidor creates an attractive, aseptic environment for the patient and the smooth surface makes it easy to clean.



Assistant's console

The assistant's console includes 3-way syringe, vacuum and saliva ejector tubings, and easy clean membrane switches to control chair movements, cuspidor bowl flush and cup filler.



Service outlet panel

The service outlet panel is easily accessible and simple to clean.



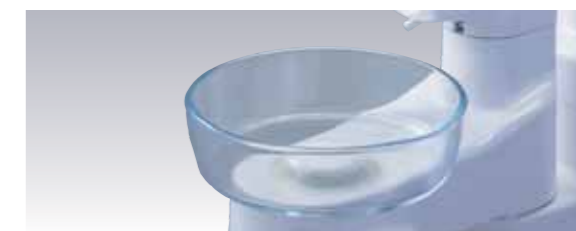
Foot control (A2 Type)

Simple foot control can control handpiece, water on/off, and chip air.



Operator's table

Incorporating holder type instrumentation with "first priority system"*, the operator's table is adjustable both vertically and horizontally to give optimal positioning.



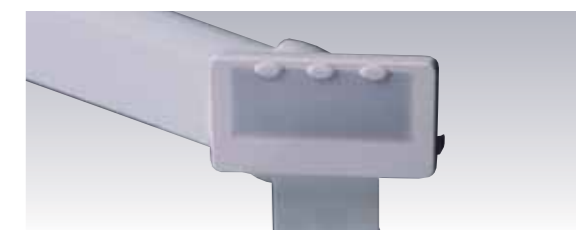
Glass bowl

Detachable glass bowl is durable, transparent and easy to clean.



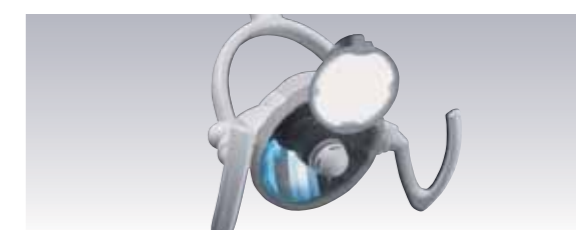
Solid collector

Easy access solid collector incorporates detachable lid and filter to enable quick and efficient cleaning.



Dental size film viewer

LED backlight intra oral film viewer



701 dental light

The smooth, balanced yet compact operating light with composite safe mode for increased operators efficiency. The unique sensor permits touchless on/off operation. The mirror and detachable handle are available as an optional extra.

Chair



Double articulating headrest

Easily adjustable for improved patient positioning.
Suitable for both adult and child.



Right armrest

Right side armrest ensures patient's comfort and relaxation.



Ratchet gear type assistant holder arm

Ratchet gear type assistant holder arm enables easier height adjustment.



Bottled water system

The bottled water system can be integrated for supply of handpiece water.

Cover for bottle

Unit



Small size operator's table

The small size operator's table is also available.



Oil mist separator

Separates oil mist from exhausts of handpiece tubing.



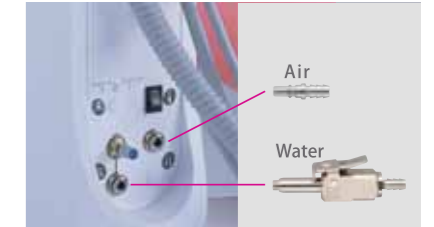
Flush out / Flush out tray

Flushing system (an optional for A type) enables easy cleaning of handpiece water lines, and flush out tray allows hands free and programmed flushing out.



Sensor cupfiller

Air timed cupfiller is available as standard. By choosing sensor cupfiller type, water is automatically dispensed when a cup is placed on cupfiller base. Cupfiller base is removable to aid disinfection.



Service coupler / Quick connector air / water

Service outlet for air. Water and air quick connectors for external instrument.



Panorama size film viewer

LED backlight panorama size film viewer



Flat screen monitor bracket

LCD (Liquid Crystal Display) bracket can be adjusted to suit individual needs (monitor not included).



Rectangular utility box

Rectangular utility box for easy installation. W 26 x D 56 x H 17 (cm)



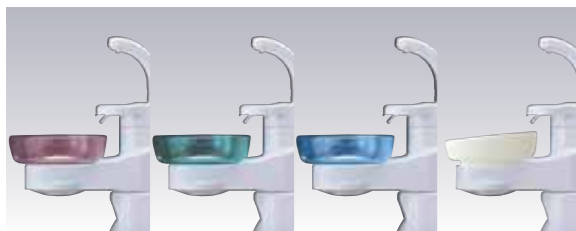
Combined foot control

Multifunction foot switch allows manual control of chair or programmed position control. Both manual and programmed position control are also available on one foot control.



Foot control handle

A grip for portability of foot control to reduce hand contact.



Colored spittoon bowl

Available in pink, green and blue. Porcelain is also available (ivory color only).



Rotatable cuspidor

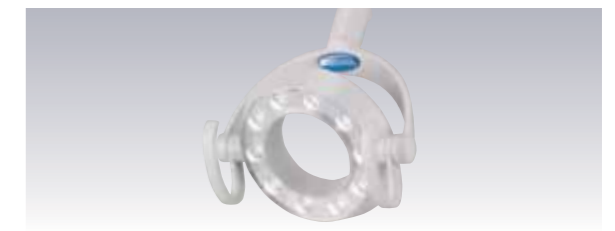
The cuspidor can rotate through 90° to facilitate patient access.

Light



IO 5000 light

Color corrected in the 5000k range. The unique sensor allows touchless on / off operation. Three light intensities 28000, 22000 and 15000lux.



900 light

The 900 LED light provides stepless intensity from 4,000 to 32,000lux at 5000 Kelvin. Smooth, three-axis head rotation enables stress free light head positioning with one hand.

Electric Type Control Panel (E Type)



- 1 Power Indicator
- 2 Safety Lock Indicator
- 3 Coolant Water ON/OFF Switch
- 4 Light Pack Switch
- 5 Micro Motor Speed Setting Switch
- 6 Micro Motor Direction Control Switch
- 7 Function Switch
- 8 Store Switch
- 9 Decreasing Switch
- 10 Increasing Switch
- 11 Chair Auto Mode Switches
- 12 Chair Manual Control Switches
- 13 Cupfiller Switch
- 14 Bowl Flush Switch
- 15 Dental Light Switch
- 16 Function Indicator

Function Switch (E Type)

| | | |
|--------------------------------------|--|---|
| TIMER SET J=START | Timer | Timer set for alarm. |
| OP. NUMBER #B 4 | Group Selection Mode | Preset position for chair and preset rotation speed for micro motor can be set for 4 groups of combination. |
| FLUSH OUT WITHOUT F=4 | Flush out system | The CLESTAI E type is available with a short and long time flushing system. |
| DEEP=ON F=4 (-)=OFF (+)=ON | Control panel switching sound on/off | Sound can be deactivated. |
| LP MODE=HOLD F=4 (-)=FOOT(+)HOLD | Fiber optic handpiece lighting mode (Optional) | Handpiece lighting mode can be chosen. |
| ALARM TYPE=0 F=4 PUSH 0 1 2 LP(3) | Electronic sound for timer | 4 electronic timer sounds to choose from. |
| MAX STEP=0 F=4 (-)=3 (+)=5 STEP | Micro motor maximum speed setting (Optional) | The maximum rotation speed of the micro motor can be selected in 3 steps or 5 steps |
| SPRAY=4MODE F=4 (-)=2 (+)=4 MODE | Coolant water ON/OFF switch | When using micro motor(s), either coolant water 2-mode or 4-mode of coolant water can be selected by mode select setup. |
| 4=4 LIND F=4 (-)=IND (+)=LIND | Cupfiller and bowl flush | Select cupfiller and bowl flush to operate together or independently. |

Digital Indicator



Micro Motor Mode

The micro motor rotation speed can be selected by sliding the foot controller pedal right or left. Rotation speed is displayed.



Scaler Mode

Easy to confirm which mode (scaler, end, perio) scaling is being selected. Power output by display.

Air Type Control Panel (A Type)



Membrane switches for chair controls and other necessary functions are clearly situated on the control panel of the operator's table.

- 1 Chair Auto Mode Switches
- 2 Chair Manual Control Switches
- 3 Light Pack Switch
- 4 Bowl Flush Switch
- 5 Cupfiller Switch

Upholstery Color Options

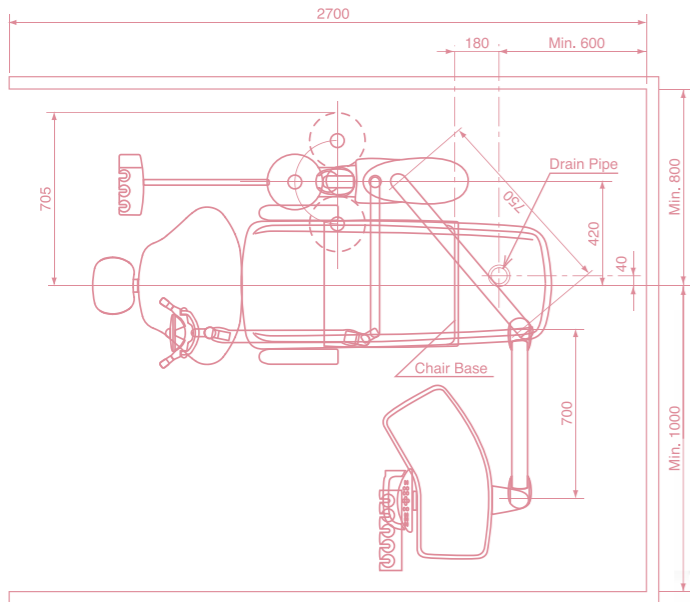




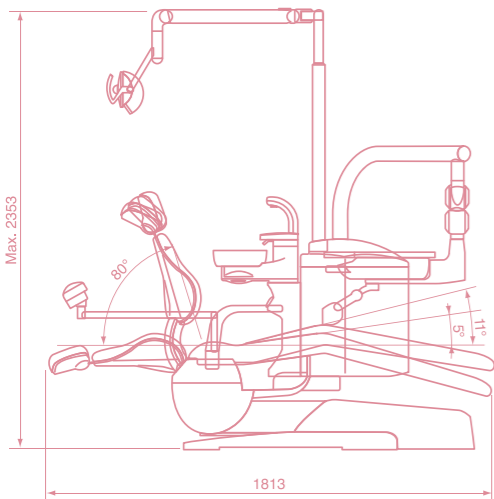
Dimensions

size (mm)

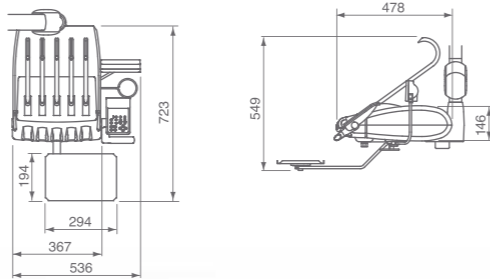
Over The Patient Type



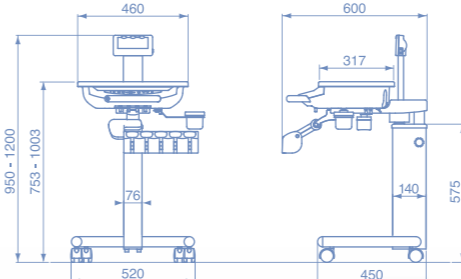
Seat Initial Height : 410 mm
Seat Lifting Stroke : 380 mm



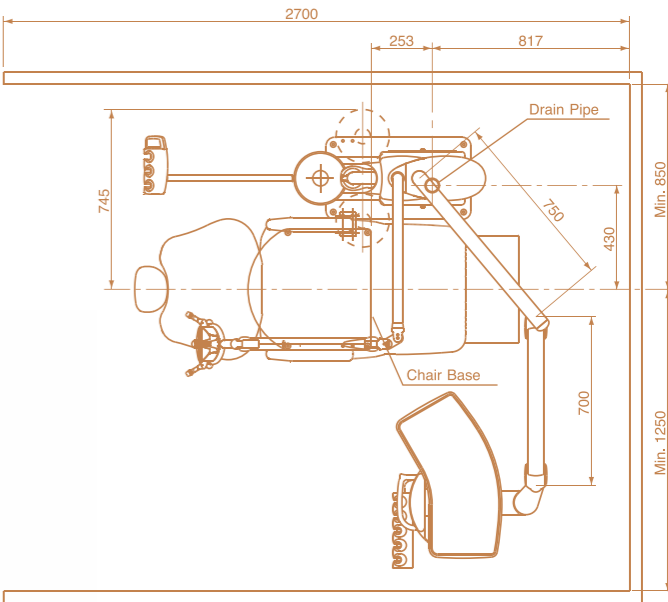
Rod Type



Cart Type



Pedestal Type



Seat Initial Height : 450 mm
Seat Lifting Stroke : 265 mm

